



SUNSURIA CITY
THE INSPIRED SIDE OF LIFE

BELL SUITES
SUNSURIA CITY

SMART · LIVABLE · SUSTAINABLE



INSPIRED LIVING THROUGH INNOVATION

Inspired by the the greatest inventor in history, Alexander Graham Bell, Bell Suites features SOHO homes that are designed for innovative lifestyles. It is part of Sunsuria City, where inspired living is attained through the themes of arts, knowledge and discovery.

Bell Suites is built right in front of Xiamen University and features magnificent views of the campus. It is connected to Bell Avenue where the convenience of a street mall and offices are by your doorstep. An innovative Transit Oriented Development which showcases the Celebration Centre is also right next door. The community is connected by ERL High Speed Train to KLIA with easy links to KL Sentral, Putrajaya/Cyberjaya and Bandar Tasik Selatan stations.

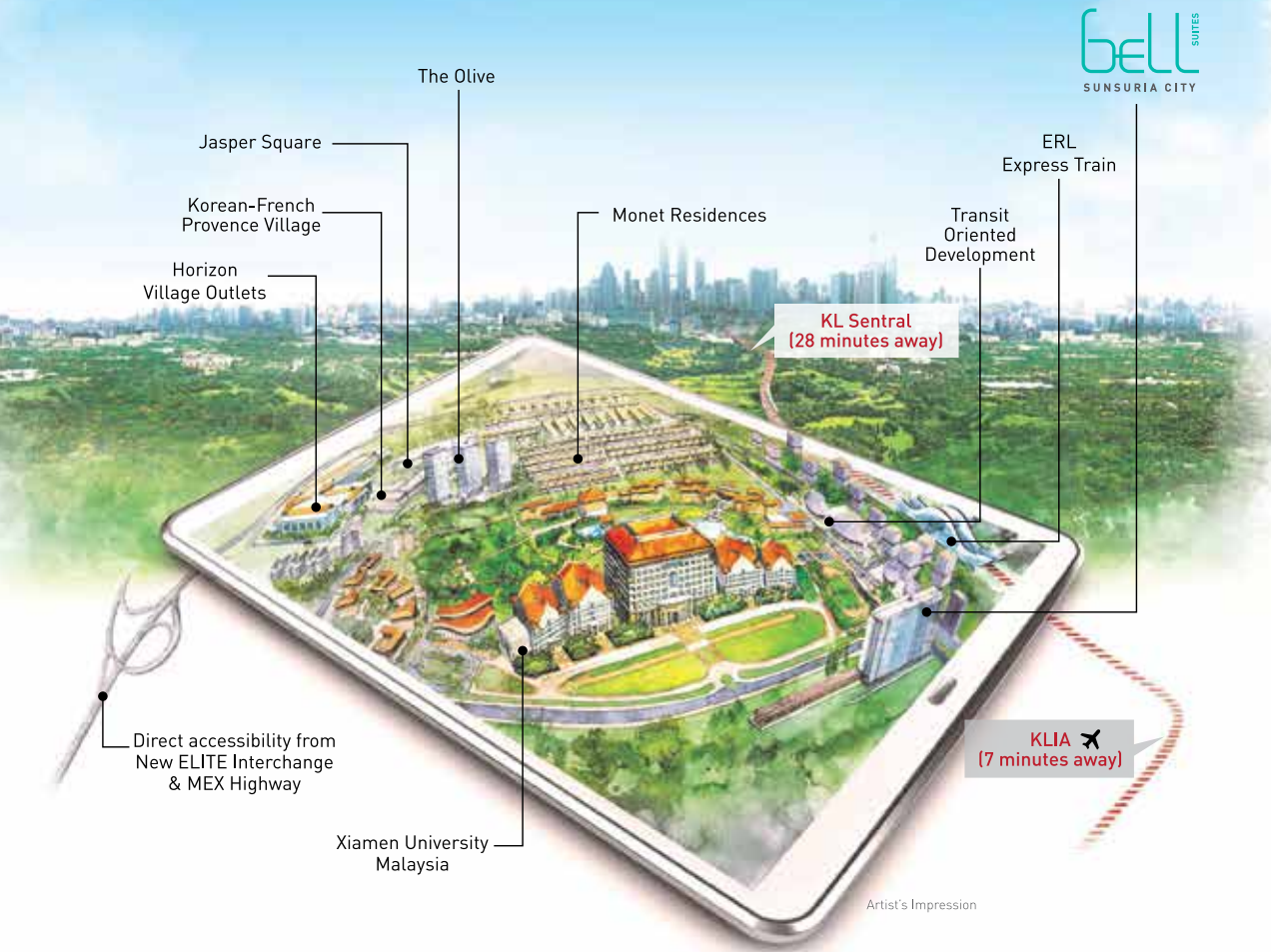
PRIME FEATURES AT BELL SUITES

Built in front of
XIAMEN UNIVERSITY MALAYSIA

Connected to street mall and offices at
BELL AVENUE

Next to the Celebration Centre at a
TRANSIT ORIENTED DEVELOPMENT

Linked to KLIA and KL City through
ERL HIGH SPEED TRAIN



The concept of Smart, Livable and Sustainable (SLS) is the core of Sunsuria's values, which touches on every aspect of its townships and developments.

SMART

Driven by IoT - The Internet of Things, we adopt the concept of intelligent convenience, displayed through integrated super-speed broadband, smart security and other ICT-ready living solutions.

LIVABLE

The idea of an organic residence where community living is key - a lifestyle where people and places come together naturally through an extensive network of bicycle paths and walkways.

SUSTAINABLE

A self-sustaining GBI compliant township that reduces energy wastage and preserves an ecosystem that benefits residents and business owners.

LIFE IN AN INTELLIGENT CITY

Imagine life where everything you need is within easy reach. Introducing Sunsuria City, an international lifestyle destination built around the core of Xiamen University Malaysia, and close to Horizon Village Outlets and KLIA - all effortlessly linked by its own integrated connection to the Express Rail Link (ERL).

Featuring 525 acres of retail malls, condominiums, serviced apartments, commercial shoplots, hotels and landed residential homes, its prime location is only the cherry on top of a perfect balance of ICT-ready infrastructure, livable environments and a sustainable master plan. There is truly no doubt that Sunsuria City is the township of tomorrow, built to bring you the very best of today.

RESIDENTIAL | COMMERCIAL | EDUCATION | LEISURE | NATURE

- Facing Xiamen University with campus view
- Dedicated New Elite Highway Interchange
- Express Rail Link (ERL) Transit Hub Connected To KL Sentral & KLIA
- Close Proximity To Kuala Lumpur International Airport (KLIA)
- Connected to Bell Avenue retail and offices
- Next to Transit Oriented Development



AVENUES FOR INSPIRATION

The development sits on a north-south orientation and faces the front of the main gate of Xiamen University. Enjoy inspirational views of the campus from the balcony, and a panorama overlooking the university from the 50-metre lap pool deck. There are a host of avenues for creative leisure everywhere with well-appointed facilities as well as thematic gardens and rejuvenating landscapes.

FACILITIES

- Thematic Garden
- Terraced Planter
- Sundeck
- Jacuzzi
- 50-metre Lap Pool
- Dip Bench
- Kids Pool
- Pool Deck
- Function Space
- Playscape
- Wall Climbing
- Mini Trampoline
- BBQ Zone

SMART FLEXIBILITY

Choose intelligent layouts made for efficient work and comfort from 1 to 2+1 bedrooms. Sizes range from 450 sq. ft. to corner units of 970 sq. ft., while specially designed Hybrid units bring larger space.

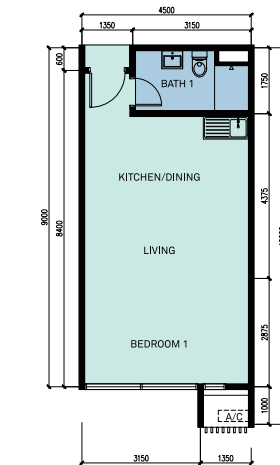
Bell Suites also features smart home systems for security and high speed internet for convenience. The 5-tier security system includes security patrols, CCTV surveillance across the property, improved card access to the lift lobby, car park and lift to unit.



FLOOR PLAN

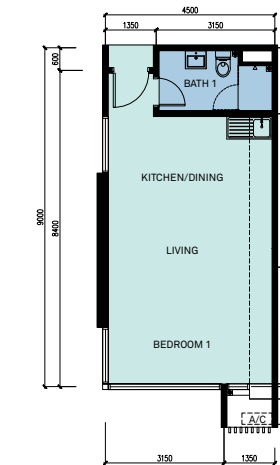
SOHO (TYPE A)

1 Bedroom
450 sq.ft.



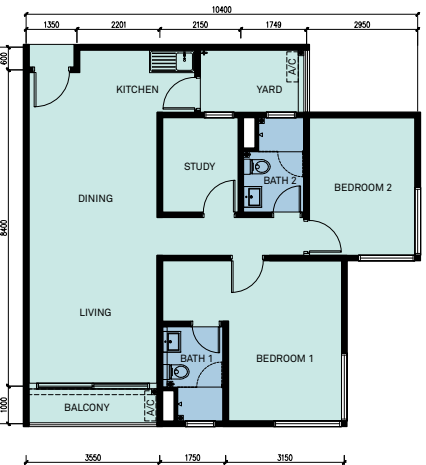
SOHO (TYPE A1)

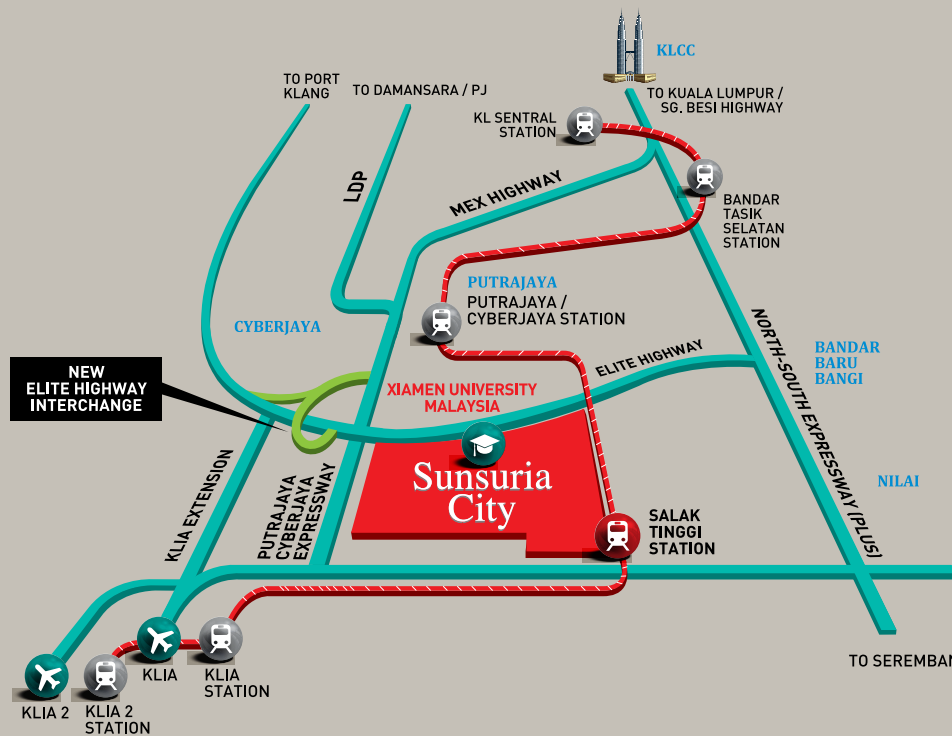
1 Bedroom
450 sq.ft.



SOHO (TYPE B)

3 Bedrooms
970 sq.ft.





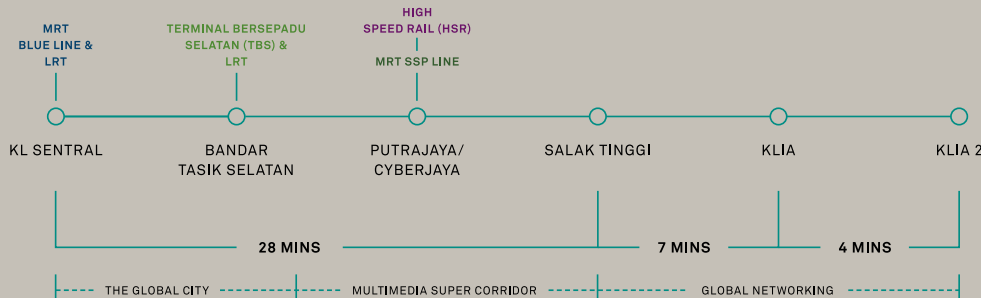
INTELLIGENT CITY. INTERNATIONAL LANDMARK.

It's time to move into an artfully designed enclave with fully integrated connectivity. Here, getting around is effortless, with the Express Rail Link (ERL) that takes you to KL Sentral within 28 minutes and KLIA within 7 minutes.

Easy Access to Key Destinations



ERL HIGH SPEED TRAIN ROUTE



AMENITIES

Universities & Colleges

- Xiamen University Malaysia
- Heriot-Watt University Malaysia
- University Malaysia Of Computer Science & Engineering
- Perdana University (Royal College Of Surgeons In Ireland)
- Cyberjaya University College of Medical Sciences (CUCMS)
- Multimedia University (MMU)
- Limkokwing University
- Cyber Putra College
- Kirkby International College

Primary & Secondary Schools

- Sekolah Kebangsaan Cyberjaya
- Sekolah Menengah Cyberjaya
- Sekolah Sultan Alam Shah

Shopping & Leisure

- Alamanda Shopping Mall
- IOI City Mall
- DPULZE Shopping Centre
- The Street Mall 2 Cyberjaya
- Sepang International Circuit (SIC)

Health & Wellness

- Hospital Putrajaya
- Klinik Pergigian Pakar Putrajaya

+603-6142 2727
www.sunsuria.com

Sunsuria City Sdn. Bhd. (1048895-A)
Suite 1-3A, Main Tower, Sunsuria Avenue,
Persiaran Mahogani, Kota Damansara,
PJU 5 47810 Petaling Jaya, Selangor

Follow us on:



Visit us:

Sunsuria Avenue
(Kota Damansara)

SUNSURIA
Building Today Creating Tomorrow

Developer: Sunsuria City Sdn. Bhd. (1048895-A) Suite 8, Main Tower, Sunsuria Avenue, Persiaran Mahogani, Kota Damansara, PJU 5 47810 Petaling Jaya, Selangor Darul Ehsan • Bell Avenue • Property Type: SOHO • Developer's License No: 14579-2/03-2019/0241(L) • Validity: 31/03/2017 - 30/03/2019 • Advertising & Sales Permit No: 14579-2/03-2019/0241(P) • Validity: 31/03/2017 - 30/03/2019 • Building Plan Approval No: MP Sepang 600-34/4/84 • Approving Authority: Majlis Perbandaran Sepang • Tenure: Freehold • Land Encumbrances: Charged to Public Bank Berhad • Expected Date of Completion: 36 months from Sale and Purchase Agreement • Total units: 478 • Total Carparks: 1,032 • Selling Price: RM 313,000 (Min) - RM 915,000 (Max) • Bumiputera Discount: 7%. The information contained herein is subject to change without notification as may be required by relevant authorities or the developer's consultants and cannot form part of an offer or contract. Actual built up of units vary slightly from measurements given. Whilst every care is taken in providing this information, the owner, developer and managers cannot be held liable for variations. All illustrations and pictures are artist's impressions only. The items are subject to variations, modifications and substitutions as may be recommended by the Company's consultants and/or relevant Approving Authorities. Terms and conditions applied.